



Chelsea Creek Tower, Chelsea Creek  
Fulham SW6

GARTON JONES.COM





# Chelsea Creek Tower, Chelsea Creek Fulham, SW6

GARTON JONES.COM

13 Park Street  
Chelsea Creek  
London  
SW6 2FS

Sales +44 (0) 20 7824 7090  
paul@gartonjones.com  
www.gartonjones.com

## £1,725,000 Leasehold

Luxury Two-Bedroom Apartment with Two Balconies —  
Chelsea Creek

A beautifully presented two-bedroom apartment spanning 1,319 sq ft (122 sq m), offering spacious, contemporary living in one of Chelsea Creek's most sought-after buildings by Berkeley St George. The open-plan lounge opens onto a private balcony, while the sleek, integrated kitchen features premium appliances. The principal bedroom enjoys an ensuite and its own private balcony, complemented by a second double bedroom and a stylish family bathroom.

Residents benefit from 24-hour concierge service, spa and fitness facilities including a swimming pool, sauna, and steam room, as well as landscaped communal gardens. The development is ideally located with Imperial Wharf Overground just moments away, Fulham Broadway (District Line) 0.6 miles, and close to King's Road, Chelsea Harbour, and riverside cafés and restaurants.

An exceptional opportunity to secure a luxury, canal-side home with generous proportions and elevated views.

Lease — 999 from 2010  
Service Charge £11,000PA  
Ground Rent - £750PA

Council Tax — London borough of Hammersmith &  
Fulham Council Band H  
EPC B (85)

- Highly Desirable Chelsea Creek Tower
- Two Bedroom Apartment With Two Balconies
- Luxury Accommodation
- Ensuite To Master Bedroom
- 1319sqft (122sqm)
- Modern Kitchen Area With Built In Appliances
- 24 Hour Concierge
- Spa, Indoor Swimming Pool, Gymnasium
- Easy Reach Of Imperial Wharf Overground Station
- EPC — B (85)

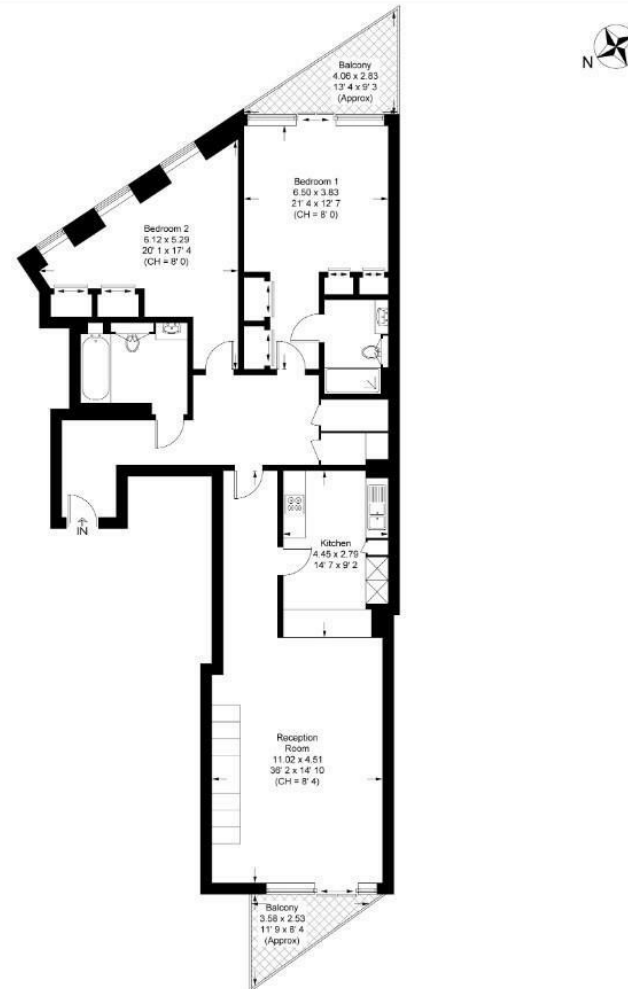


EPC certificate available on request.

**Chelsea Creek Tower**

Approximate Gross Internal Area = 1319 sq ft / 122.5 sq m  
Balcony = 114 sq ft / 10.6 sq m

GARTON JONES  
LONDON



This plan is not to scale and must be used as layout guidance only. All measurements and areas are approximate and should not be relied upon to provide accurate information. This plan must not be relied upon when making property valuations, design considerations or any other such relevant decisions. We accept no responsibility or liability (whether in contract, tort or otherwise) in relation to any loss whatsoever arising from or in connection with any use of this plan or the adequacy, accuracy or completeness of it or any information within it.





